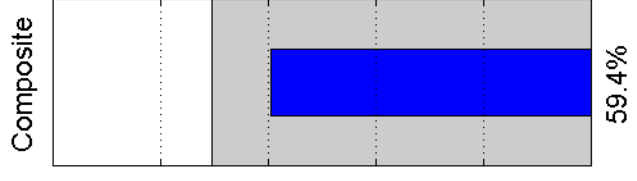
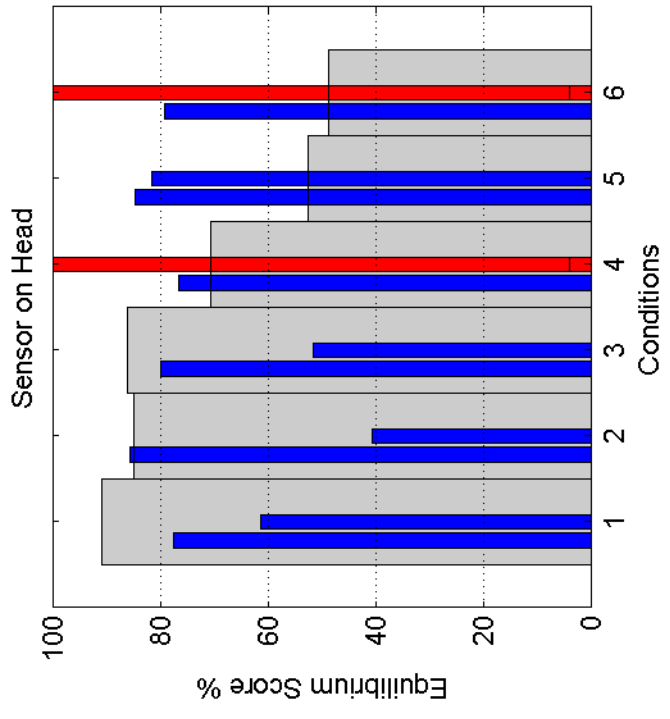


Gray:Normal boundaries Blue:Equilibrium score

Test Conditions:

- 1.Romberg open stance eyes open
- 2.Romberg open stance eyes closed
- 3.Tandem Romberg RIGHT foot forward eyes open
- 4.Tandem Romberg RIGHT foot forward eyes closed
- 5.Tandem Romberg LEFT foot forward eyes open
- 6.Tandem Romberg LEFT foot forward eyes closed



A RED BAR INDICATES A FALL.

Normative Values
 > 70.4% pass
 < 70.4% fail